

# GRAVITY PROBE B PROCEDURE FOR SCIENCE MISSION DEWAR

## EXTERNAL GUARD TANK FILL – MAIN TANK SUBATMOSPHERIC

To be performed at Vandenberg Air Force Base B1610

**WARNING: THIS DOCUMENT CONTAINS HAZARDOUS OPERATIONS**

P1028B  
ECO 1467  
January 8, 2004

Written by:

Checked by:

\_\_\_\_\_ Date \_\_\_\_\_  
Ned Calder  
Cryogenic Test

\_\_\_\_\_ Date \_\_\_\_\_  
Dave Murray  
Cryogenic Test

Approvals:

\_\_\_\_\_ Date \_\_\_\_\_  
Dorrene Ross  
Quality Assurance

\_\_\_\_\_ Date \_\_\_\_\_  
Harv Moscovitz  
LM Safety

\_\_\_\_\_ Date \_\_\_\_\_  
Robert Brumley

\_\_\_\_\_ Date \_\_\_\_\_  
Mike Taber  
Payload Test Director

\_\_\_\_\_ Date \_\_\_\_\_  
NASA/KSC Safety

## REVISION RECORD

<b>REVISION</b>	<b>ECO</b>	<b>PAGES</b>	<b>DATE</b>
A	1462	Change application location, add configuration requirement of GSE connection to P802, add SV-13 op to G.8, update DAS Configure, G.5 and update RAV-2 Close, G.15.	12/5/03
B	1467	Update redlines, add SMD figure, add ops for complete filling of guard tank.	1/8/04

**Table of Contents**

A.	SCOPE.....	2
B.	SAFETY .....	2
	B.1. Potential Hazards.....	2
	B.2. Mitigation of Hazards .....	2
	B.3. Mishap Notification.....	3
C.	QUALITY ASSURANCE .....	3
	C.1. QA Notification .....	3
	C.2. Red-line Authority.....	3
	C.3. Discrepancies.....	4
D.	TEST PERSONNEL .....	4
	D.1. Personnel Responsibilities .....	4
	D.2. Personnel Qualifications .....	4
	D.3. Required Personnel .....	5
E.	REQUIREMENTS.....	5
	E.1. Electrostatic Discharge Requirements .....	5
	E.2. Lifting Operation Requirements .....	5
	E.3. Hardware/Software Requirements .....	5
	E.4. Instrument Pretest Requirements.....	6
	E.5. Configuration Requirements .....	8
	E.6. Optional Non-flight Configurations .....	9
F.	REFERENCE DOCUMENTS.....	9
	F.1. Drawings.....	9
	F.2. Supporting documentation .....	9
	F.3. Additional Procedures.....	9
G.	OPERATIONS .....	10
	G.1. Pre-Operations Verifications .....	10
	G.2. Verify Content of All Sources of Helium Gas .....	10
	G.3. Verify Configuration Requirements .....	11
	G.4. Verify Gas-Module Configuration and Record Initial Conditions.....	11
	G.5. Verify SMD Configuration.....	12
	G.6. Set Up Data Acquisition System .....	12
	G.7. Check Initial Pressure in Fill Line .....	13
	G.8. Raise Pressure in Fill Line.....	14
	G.9. Install Stinger in LHSD.....	14
	G.10. Install Transfer Line Assembly .....	15
	G.11. Condition Transfer Line/Filter/Stinger Assembly .....	16
	G.12. Start Transfer .....	17
	G.13. Verify Start of Transfer .....	18
	G.14. Terminate Transfer.....	19
	G.15. Condition SMD Internal Fill Line .....	19
	G.16. Place Data Acquisition System in Standard Configuration.....	21
	G.17. Secure LHSD .....	22
	G.18. Perform Final Closure of SV-13 and Condition Dewar Fill Cap Assembly.....	23
	G.19. Establish Final Configuration.....	24
H.	PROCEDURE COMPLETION .....	24
I.	APPENDIX 1 .....	28
J.	APPENDIX 2 .....	30
K.	APPENDIX 3– CONTINGENCY/EMERGENCY RESPONSES .....	31

**List of Abbreviations and Acronyms**

AG-x	Gauge x of Gas Module auxiliary section	MT	Main Tank
AMI	American Magnetics Inc.	MTVC	Main Tank Vent Cap
ATC	Advanced Technology Center	MTVC-G	Main Tank Vent Cap pressure gauge
APR-x	Pressure regulator x of Gas Module	MTVC-RV	Main Tank Vent Cap relief valve
AV-x	Valve x of Gas Module auxiliary section	MTVC-V	Main Tank Vent Cap valve
CG-x	Gauge x of portable helium pressurization source	NBP	Normal boiling point
CPR-x	Pressure regulator x of portable helium pressurization source	ONR	Office of Naval Research
CV-x	Valve x of portable helium pressurization source	PFCG	Fill Cap assembly pressure Gauge
CN [xx]	Data acquisition channel number	PFM	Pump equipment Flow Meter
DAS	Data Acquisition System	PG-x	Gauge x of Pump equipment
EFM	Exhaust gas Flow Meter	PM	Pump Module
EG-x	Gauge x of Gas Module exhaust section	psi	pounds per square inch
EH-x	Vent line heat exchanger in Gas Module	psig	pounds per square inch gauge
EM	Electrical Module	PTD	Payload Test Director
ERV-x	Relief valve of Gas Module exhaust section	PV-x	Valve x of the Pump equipment
ETC	External Temperature Controller		
EV-x	Valve number x of Gas Module exhaust section	QA	Quality Assurance
FCV	Fill Cap Valve	RAV-x	Remote Actuated Valve-x
FIST	Full Integrated System Test	RGA	Residual Gas Analyzer
GHe	Gaseous Helium	SMD	Science Mission Dewar
GM	Gas Module	STG	SMD Thruster vent pressure gauge
GP-B	Gravity Probe-B	SU	Stanford University
GSE	Ground Support Equipment	SV-x	SMD Valve number x
GT	Guard Tank	TG-x	Gauge x of Utility Turbo System
GTVC	Guard Tank Vent Cap	TV-x	Valve x of Utility Turbo System
GTVC-G	Guard Tank Vent Cap pressure gauge	UTS	Utility Turbo System
GTVC-RV	Guard Tank Vent Cap relief valve	Vac	Vacuum
GTVC-V	Guard Tank Vent Cap valve	VCP-x	Vent cap pressure gauge
GTV-G	Guard Tank vent pressure gauge	VCRV-x	Vent cap relief valve
GTV-RV	Guard Tank vent relief valve	VCV-x	Vent cap valve
GTV-V	Guard Tank vent valve	VDC	Volts Direct Current
KFxx	Quick connect o-ring vacuum flange (xx mm diameter)	VF-x	Liquid helium Fill line valve
LHe	Liquid Helium	VG-x	Gauge x of Vacuum Module
LHSD	Liquid Helium Supply Dewar	VM	Vacuum Module
LHV-x	Liquid Helium Supply Dewar valves	VV-x	Valve x of Vacuum Module
LLS	Liquid level sensor	VW-x	Valve x of Dewar Adapter
LM	Lockheed Martin Co.		

**LIST OF SPECIFIC HEADING DEFINITIONS**

Each type of alert message will precede the procedural step to which it applies

1. NOTE: Used to indicate an operating procedure of such importance that it must be emphasized
2. CAUTION: Used to identify hazards to equipment
3. WARNING: Used to identify hazards to personnel

**A. SCOPE**

This procedure describes the steps necessary to perform an external fill of the SMD Guard Tank with normal boiling point liquid helium. This procedure requires that the guard tank vent is connected to the Gas Module and that P802 is connected to GSE so that RAV-2 can be operated by GSE. The steps include:

- Pre-cool SMD internal fill line from Guard Tank
- Pre-cool external transfer line
- Fill Guard Tank
- Terminate transfer
- Pump and close out dewar fill line

The procedure is for use when the Main Tank is Subatmospheric and closed off at the vent cap. Precooling of the internal fill line is accomplished using liquid from the Guard Tank itself. For this reason it is imperative that the Guard Tank liquid level be maintained at a value greater than 15%.

The hazardous operations in this procedure are stinging and destinging the liquid helium supply dewars (LHSD).

**B. SAFETY****B.1. Potential Hazards**

Personal injury and hardware damage can result during normal positioning, assembly and disassembly of hardware.

Liquid helium used in the SMD represents a hazardous material for the personnel involved in the operations. Cryogenic burns can be caused by contact with the cold liquid or gas, high pressures can result if boiling liquid or cold gas is confined without a vent path, and asphyxiation can result if the vent gas is allowed to accumulate.

The SMD Safety Compliance Assessment, document GPB-100153C and the Missile System Prelaunch Safety Package discuss the safety design, operating requirements and the hazard analysis of the SMD.

**B.2. Mitigation of Hazards****B.2.1. Lifting hazards**

There are no lifting operations in this procedure

**B.2.2. Cryogenic Hazards**

In VAFB MST, the GP-B cryogenic team provides an oxygen deficiency monitor that alarms when the oxygen level is reduced to 19.5%. Additional temperature and pressure alarms, provided by the DAS, warn of potential over-pressure conditions. Emergency vent lines are installed over the four burst disks to direct any flow to an outside area.

Only authorized and trained personnel are allowed in VAFB facilities without escort. All personnel working on platforms at a height 30 inches or more off the floor are required to have an approved air tank (emergency breathing apparatus) within easy reach. Note that tank need not be kept available when working from ladder. In the unlikely event of a large LHe spill all employees have been instructed to evacuate the room and contact NASA and VAFB safety.

The following additional requirements apply to all personnel involved directly in cryogenic operations. Gloves that are impervious to liquid helium and liquid nitrogen are to be worn whenever the possibility of splashing or impingement of high-velocity cryogenics exists or when handling equipment that has been cooled to cryogenic temperatures. Protective clothing, non-absorbent shoes and full-face shields with goggles/glasses are to be worn whenever the possibility of splashing cryogenics exists

B.2.3. Other Hazards

All tools or other items used with the potential to damage the space vehicle shall be tethered

B.3. **Mishap Notification**

B.3.1. Injury

In case of illness/injury requiring Emergency medical treatment, **Dial 911**

B.3.2. Hardware Mishap

In case of an accident, incident, or mishap, notification is to proceed per the procedures outlined in Lockheed Martin Engineering Memorandum EM SYS229 and Stanford University GP-B P0879. Additionally, VAFB NASA Safety and 30<sup>th</sup> Space Wing Safety will be notified as required.

B.3.3. Contingency Response

Responses to contingencies/emergency (e.g., power failure) are listed in Appendix 3.

C. **QUALITY ASSURANCE**

C.1. **QA Notification**

***The NASA program and the NASA safety representative and SU QA shall be notified 24 hours prior to the start of this procedure.*** Upon completion of this procedure, the QE Manager will certify his/her concurrence that the effort was performed and accomplished in accordance with the prescribed instructions by signing and dating in the designated place(s) in this document.

C.2. **Red-line Authority**

Authority to red-line (make minor changes during execution) this procedure is given solely to the TD or his designate and shall be approved by the QA Representative. Additionally, approval by the Payload Technical Manager shall be required, if in the judgment of the TD or QA Representative, experiment functionality may be affected. Within hazardous portions of this procedure, all steps shall be worked in sequence. Out-of-sequence work or redlines shall be approved by NASA Safety prior to their performance.

### C.3. **Discrepancies**

A Quality Assurance Representative designated by D. Ross shall review any discrepancy noted during this procedure, and approve its disposition.

Discrepancies will be recorded in a D-log or a DR per Quality Plan P0108. Any time a procedure calls for verification of a specific configuration and that configuration is not the current configuration, it represents a discrepancy of one of three types. These types are to be dealt with as described below.

1. If the discrepancy has minimal effect on procedure functionality (such as the state of a valve that is irrelevant to performance of the procedure) it shall be documented in the procedure, together with the resolution. Redlines to procedures are included in this category.
2. If the discrepancy is minor and affects procedure functionality but not flight hardware fit or function, it shall be recorded in the D-log. Resolution shall be in consultation with the PTD and approved by the QA representative.
3. All critical and major discrepancies, those that effect flight hardware fit or functions, shall be documented in a D-log and also in a Discrepancy Report, per P0108.

## D. **TEST PERSONNEL**

### D.1. **Personnel Responsibilities**

The performance of this procedure requires a minimum complement of personnel as determined by the Test Director. The person performing the operations (Test Director or Test Engineer) is to sign the “Completed by” sign-off. Any other qualified person or QA person who can attest to the successful performance of this procedure may sign the “Witnessed by” sign-off. The Test Director will perform Pre-Test and Post-Test Briefings in accordance with P0875 “GP-B Maintenance and Testing at all Facilities.” Checklists will be used as directed by P0875

### D.2. **Personnel Qualifications**

The Test Director must have a detailed understanding of all procedures and facility operations and experience in all of the SMD operations. Test Engineers must have SMD Cryogenic operations experience and an understanding of the operations and procedures used for the cryogenic servicing/maintenance of the Dewar.



**D.3. Required Personnel**

The following personnel are essential to the accomplishment of this procedure:

<u>FUNCTIONAL TITLE</u>	<u>NUMBER</u>	<u>AFFILIATION</u>
Test Director/Test Engineer	1	Stanford
GP-B Quality Assurance	1	Stanford
NASA Safety Rep	1	SFAO or ANALEX

**E. REQUIREMENTS****E.1. Electrostatic Discharge Requirements**

When working on the space vehicle, proper ESD protection is required. All ESD wrist straps will be checked on an appropriate calibrated checker prior to use.

**E.2. Lifting Operation Requirements**

There are no lifting operations in this procedure

**E.3. Hardware/Software Requirements****E.3.1. Commercial Test Equipment**

No commercial test equipment is required for this operation.

**E.3.2. Ground Support Equipment**

The Ground Support Equipment includes the Gas Module, the pump module and the Electrical Module. The Gas Module provides the capability to configure vent paths, read pressures and flow rates, and pump and backfill vent lines. The Pump Module provides greater pumping capacity than the Gas Module, together with additional flow metering capabilities. The vent output of the Gas Module flows through the Pump Module. The Electrical Module contains the instruments listed in Table 1, and provides remote control of valves in the Gas Module, Pump Module, and SMD.

This procedure calls for use of hardware located in the Gas, and Electrical Modules.

**E.3.3. Computers and Software:**

The Data Acquisition System (DAS) and data acquisition software are required for this procedure. The DAS reads and displays pressures, temperatures, and flow rates and monitors critical parameters. No additional computers or software are required.

**E.3.4. Additional Test Equipment**

<i>Description</i>	<i>Manufacturer</i>	<i>Model</i>
AMI Level Sensor Readout for LHSD	AMI	110

**E.3.5. Additional Hardware**

<i>Description</i>	<i>Manufacturer</i>	<i>Model</i>
Filter Line assembly	LMMS	5833827
Liquid He Transfer Line	LMMS	5833804

<i>Description</i>	<i>Manufacturer</i>	<i>Model</i>
Liquid He Stinger	LMMS	5833803
GHe supply fittings to LHSD	N/A	N/A
4 liter thermos	N/A	N/A

## E.3.6. Tools

<i>Description</i>
Torque Wrench, 1-1/4-in socket, 60 in-lb S/N #: _____ Cal Due Date: _____

## E.3.7. Personnel Protective Equipment

1. Cryogenic safety gloves and apron
2. Face Shield
3. Goggles/glasses
4. Non-absorbent shoes
5. Rubber Gloves (if alcohol is to be used)

## E.3.8. Expendables

**WARNING**

**Alcohol is a skin irritant, potentially toxic if skin absorbed, and flammable. All hazardous waste will be placed into approved waste containers.**

## E.3.9.

<i>Description</i>	<i>Quantity</i>	<i>Mfr./Part No.</i>
Isopropanol	AR	N/A
99.999% pure gaseous helium	AR	N/A
Vacuum Grease	AR	Apeizon or Dow Corning High Vacuum
Liter Liquid Helium Storage Dewar	AR	SU or commercial
Tie wraps - large size	AR	N/A

E.4. **Instrument Pretest Requirements**

The GSE instruments required to perform this procedure are listed in Table 1, together with their serial numbers, where available. Instruments that are required to have current calibrations are indicated in the Cal-Required column. Instruments that do not require calibration are those not used to verify performance requirements and are not connected to flight instrumentation. The status column is to be filled in with the due date of the instrument calibration

sticker and verified to be in calibration by QE or QE designee. Serial numbers are to be updated as appropriate.

**Table 1. Required Instrumentation and Calibration Status**

<b>No.</b>	<b>Location</b>	<b>Description</b>	<b>Name</b>	<b>Serial No.</b>	<b>Cal Required</b>	<b>Status Cal due date</b>
1	DAS	Power Supply, H-P 6627A	A1, A2, A3, A4	3452A01975	Yes	
2	DAS	Power Supply, H-P 6627A	B1, B2, B3, B4	3452A01956	Yes	
3	DAS	Data Acquisition/Control Unit H-P 3497A	-	2936A245539	No	-
4	DAS	Digital Multimeter H-P 3458A	-	2823A15047	Yes	
5	EM	Vacuum Gauge Controller Granville-Phillips Model 316	EG-1a, -1b	2827	No	-
6	EM	Vacuum Gauge Controller Granville-Phillips Model 316	AG-2a, -2b	2826	No	-
7	EM	Vacuum Gauge Controller Granville-Phillips Model 316	EG-3	2828	No	-
8	EM	MKS PDR-C-2C	EG-2, FCG	92022108A	No	-
9	EM	Flow meter – Matheson 8170	EFM-1	96186	No	-
10	EM	Flow meter totalizer Matheson 8124	EFM-1	96174	No	-
11	EM	Liquid Helium Level Controller American Magnetics, Inc. 136	LLS Main Tank	96-409-11	No	-
12	EM	Liquid Helium Level Controller American Magnetics, Inc. 136	LLS Guard Tank	96-409-10	No	-
13	EM	Liquid Helium Level Controller American Magnetics, Inc. 136	LLS Well	96-409-9	No	-
14	EM	Liquid Helium Level Controller American Magnetics, Inc. 136	LLS Axial Lock	96-409-12	No	-
15	EM	Pressure Controller – MKS 152F-92	EV-7a, -7b	96203410A	No	-
16	EM	Power Supply HP 6038A	H08D Tank Heater	96023407A	Yes	
17	EM	Power Supply HP 6038A	H09D Tank Heater	3511A-13332	Yes	
18	EM	Power Supply HP 6038A	RAV Power Supply	3329A-12486	Yes	
19	EM	Vac Ion Pump power supply Varian 929-0910, Minivac	SIP	5004N	No	-
20	EM	Flow meter totalizer Veeder-Root	PFM-1	576013-716	No	-
21	GM	Pressure Gauge, Heise	AG-1	CC-122077	No	-
22	GM	Pressure Gauge, Marshall Town	AG-3	N/A	No	-
23	GM	Main Tank Heat Exchanger: a) Thermocouple, b) Current meter, c) Temperature set point controller	EH-1	C-19950	No	-
24	GM	Guard Tank Heat Exchanger:	EH-2	C-09920	No	-

<b>No.</b>	<b>Location</b>	<b>Description</b>	<b>Name</b>	<b>Serial No.</b>	<b>Cal Required</b>	<b>Status Cal due date</b>
		a) Thermocouple, b) Current meter, c) Temperature set point controller				
25	VM	Vacuum Gauge readout, Granville-Phillips 316	VG-3 VG-4	2878	No	-
26	VM	Vacuum Gauge readout, Granville-Phillips 360	VG-1, VG-2 VG-5	96021521	No	-

### E.5. Configuration Requirements

#### E.5.1. Main Tank

Liquid in the Main Tank is subatmospheric.

#### E.5.2. Guard Tank

The Guard-Tank liquid level (Guard Tank LLS-B) must be greater than 15% to adequately precool the internal fill line.

#### E.5.3. Well

The Well is evacuated.

#### E.5.4. SMD Vacuum Shell

The Vacuum Shell pressure must be less than  $5 \times 10^{-5}$  torr. If not, perform P1015, *Connect Vacuum Module to SMD*, which connects and pumps on the SMD vacuum shell. If used enter the operations order number here \_\_\_\_ .

#### E.5.5. Alarm System

1. The DAS alarm system must be enabled and contain the following alarm set-points:
  - a. Top of lead bag temperature set (CN 175) at  $T \leq 2.2$  K.
  - b. Bottom Main Tank temperature set (CN 9/171) at  $T \leq 2.2$  K
  - c. Relative Guard Tank Pressure (CN 46) set at  $\Delta P \geq 0.3$  torr.
2. The watchdog timer must be enabled

#### E.5.6. GSE and Non-flight Hardware

1. The Guard Tank vent line must be connected to the Gas Module with a vacuum insulated line (P/N 5833813). Document No. P1005, *Connect Guard Tank Vent Line to Gas Module*, contains the procedures for connecting the Guard Tank vent line.
2. The Fill Cap Assembly must be installed at SV-13 (Figure 3)
3. The ion-pump magnet must be installed.
4. GSE cable must be connected to P802 so that RAV-2 can be operated by GSE.

**E.6. Optional Non-flight Configurations**

The following non-flight modifications of the basic SMD and optional GSE configurations are incidental to the performance of this procedure. Any combination represents an acceptable configuration.

1. The SMD maybe installed in its transportation and test fixture.
2. The Vacuum shell pump out port at SV-14 may be connected to the Vacuum Module (P/N 5833816) via a 2-in valve and pumping line, with the valve in either the closed position or in the open position. The Vacuum Module pump may be off, actively pumping the pumping line up to a closed SV-14, or actively pumping the vacuum shell.

**F. REFERENCE DOCUMENTS****F.1. Drawings**

<i>Drawing No.</i>	<i>Title</i>
LMMS-5833394	Instrumentation Installation

**F.2. Supporting documentation**

<i>Document No.</i>	<i>Title</i>
LMMC-5835031	GP-B Magnetic Control Plan
GPB-100153C	SMD Safety Compliance Assessment
LM/P479945	Missile System Prelaunch Safety Package
SU/GP-B P0141	FIST Emergency Procedures
LMSC-P088357	Science Mission Dewar Critical Design Review
SU/GP-B P0108	Quality Plan
LMMS GPB-100333	Science Mission Dewar Failure Effects and Causes Analysis
SU/GP-B P059	GP-B Contamination Control Plan
EM SYS229	Accident/Mishap/Incident Notification Process
EWB 127-1	Eastern and Western Range Safety Requirements
KHB 1710.2 rev E	Kennedy Space Center Safety Practices Handbook

**F.3. Additional Procedures**

<i>Document No.</i>	<i>Title</i>
SU/GP-B P0879	Accident/Incident/Mishap Notification Process
SU/GP-B P1015	Connect Vacuum Module to SMD
SU/GP-B P0875	GP-B Maintenance and Testing at all Facilities
SU/GP-B P1005	Connect Guard Tank Vent Line to Gas Module

Operation Number: \_\_\_\_\_

Date Initiated: \_\_\_\_\_

Time Initiated: \_\_\_\_\_

**G. OPERATIONS**

**G.1. Pre-Operations Verifications**

- o Verify SU QA notified.

Record: Individual notified \_\_\_\_\_,

Date/time \_\_\_\_\_/\_\_\_\_\_.

- o Verify NASA program representative notified.

Record: Individual notified \_\_\_\_\_,

- o Verify Facility Safety representative notified and concurrence has been given to proceed.

Record: Individual notified \_\_\_\_\_

Date/Time: \_\_\_\_\_,

- o Record calibration due dates in Table 1 (Sections. E.3.4, E.4)
- o Persons actually performing this procedure should list their names in Sec D.3.
- o Verify completion of the pre-operations checklist (Appendix 1).
- o Verify proper operation of GP-B Cryogenic Team oxygen monitor
- o Verify availability and operation of an emergency shower
- o If burst disk vent lines are connected verify they are connected to an outside source

**G.2. Verify Content of All Sources of Helium Gas**

G.2.1. Record serial number on helium bottle/s.

1. \_\_\_\_\_ 2. \_\_\_\_\_ 3. \_\_\_\_\_

4. \_\_\_\_\_ 5. \_\_\_\_\_ 6. \_\_\_\_\_

Verify helium bottle/s have been tested for content and record Op. Number.

Op. Number: \_\_\_\_\_

QA Witness: \_\_\_\_\_

**G.3. Verify Configuration Requirements**

- G.3.1. Verify Guard Tank vent line connected to Gas Module. If not, perform procedure P1005, *Connect Guard Tank Vent Line to Gas Module*, to connect Guard Tank vent and record the operations order number \_\_\_\_\_.
- G.3.2. Verify GSE cable connected at P802
- G.3.3. Verify Fill Cap Assembly installed at SV-13.
- G.3.4. Verify ion-pump magnet installed.
- G.3.5. Verify Main Tank subatmospheric.
- G.3.6. Record Main Tank temperature, CN [09] \_\_\_\_\_ K and verify  $< 4.2$  K.
- G.3.7. Verify DAS alarm system enabled and record set points.
1. **Bottom Main Tank temperature** – verify CN [09] on DAS alarm list and set to alarm at  $T \leq 2.2$  K. Record set point. \_\_\_\_\_ K
  2. **Relative Guard Tank Pressure** – verify CN [46] on DAS alarm list and set to alarm at  $\Delta P \geq 3$  torr. Record set point. \_\_\_\_\_ torr
- G.3.8. Ensure DAS watchdog timer and alarm enabled.
- G.3.9. Ensure liquid-level alarms enabled and record set points.
1. **Guard Tank** – ensure liquid-level alarm set  $\geq 20\%$ . Record set point. \_\_\_\_\_%
- G.3.10. If Guard Tank is expected to drop below 20% during precool, switch Guard Tank level alarm off

Section Complete, Quality \_\_\_\_\_

**G.4. Verify Gas-Module Configuration and Record Initial Conditions**

- G.4.1. Verify EV-13, EV-16 open.
- G.4.2. Verify all other EV and AV valves closed
- G.4.3. Verify Vacuum Shell Pressure  $< 5 \times 10^{-5}$  torr.
1. Turn on Vac-ion pump and record time of day \_\_\_\_\_
  2. Use DAS [Monitor Data] for CN 99.
  3. When value is steady, record pressure (IP) \_\_\_\_\_ torr. If pressure is above  $5 \times 10^{-5}$  torr, turn off Vac-ion pump and perform procedure P1015, *Connection of High Vacuum Pumping Module*, to connect Vacuum Module and pump out SMD vacuum shell and record the operations order number \_\_\_\_\_.

4. Exit [Monitor Data] and collect data with [Set Data Interval] to 5 min.
5. When data cycle is complete, turn off Vac-ion pump.
6. Input comment to DAS: "VIP =" + (observed value of CN99).

G.4.4. Record initial liquid helium levels.

1. **Main Tank** \_\_\_\_\_ %
2. **Guard Tank** – verify level  $\geq$  15% to precool internal transfer line. \_\_\_\_\_ %

G.4.5. Record initial temperatures

1. Top of Lead Bag CN [175] \_\_\_\_\_ K.
2. Bottom Main Tank CN [09] \_\_\_\_\_ K.

G.4.6. Record pressures.

1. Guard Tank (GTV-G) CN [46]: \_\_\_\_\_ torr (relative to atm.).

G.4.7. Record Fill Cap Assembly pressure and verify that it reads > 760 torr.  
Fill Cap Assembly pressure (PFCG): \_\_\_\_\_ torr.

G.4.8. If Well is being pumped record UTS pressure at TG-1 \_\_\_\_\_ torr.  
Section Complete Quality \_\_\_\_\_

#### G.5. Verify SMD Configuration

G.5.1. Using the RAV log book verify that the dewar's internal valves are in the following positions. If not, investigate to ensure previous RAV operations properly recorded. If necessary, note resolution in D-log.

1. **Closed:** RAV-1, RAV-2, RAV-5, RAV-6A, and RAV-7.
2. **Record** position of RAV-3 \_\_\_\_\_  
and RAV-6B \_\_\_\_\_.

G.5.2. Verify that SMD external valves are in the following positions.  
**Closed:** SV-13 and FCV.

Section Complete Quality \_\_\_\_\_

#### G.6. Set Up Data Acquisition System

G.6.1. Record DAS configuration (e.g., 4ae) \_\_\_\_\_.

G.6.2. Start "Special Data Cycle" by using [Other Menu] + [Special Data Col]  
+

1. Select CN [48], [170], [46], [150], [165] and [171]

**OR:**

2. Select CN [09], [24], [46], [150], [165] and [42].

G.6.3. **And:** + [Init. Collectn] + [Enter] (=use default file)

G.6.4. Power on External Temperature Control unit No. 5, GT Vent Line, and



record Cont Temp (top) \_\_\_\_\_ °C , Over Temp (bottom) \_\_\_\_\_ °C.

- G.6.5. Verify Temperature Controller set point is set at 30°C.
- G.6.6. Turn on power supply No. 5, GT Vent Line, and verify temperature control action is operational.
- G.6.7. Set Guard Tank Liquid Level Sensor sampling interval to 1 min.
- G.6.8. If used, set Main Tank Liquid Level Sensor sampling interval to 10 min.
- G.6.9. Ensure printer is displaying Special Data Cycle data.

Section Complete Quality\_\_\_\_\_

**G.7. Check Initial Pressure in Fill Line**

- G.7.1. Install a pumping line between valve FCV on the Fill Cap Assembly and the Access Port #1 of the Auxiliary gas section.
- G.7.2. Turn on/verify on pump AP-1.
- G.7.3. Open AV-8 and AV-3.
- G.7.4. Open valve FCV and evacuate to **20 mtorr** as measured at AG-2.
- G.7.5. Close AV-8.
- G.7.6. Close FCV.
- G.7.7. Once the pressure in the Fill Cap Assembly has stabilized, record Fill Cap Assembly pressure (PFCG): \_\_\_\_\_ torr.
- G.7.8. Open valve SV-13 to bring Fill Cap Assembly up to SMD Fill line pressure and record PFCG \_\_\_\_\_ torr.

Section Complete Quality\_\_\_\_\_

**G.8. Raise Pressure in Fill Line**

G.8.1. Open RAV-2 to bring Fill line up to Guard Tank pressure as follows.

1. Ensure all RAV selection switches in OFF position.
2. Turn on RAV power supply and adjust current limit to 1.95 A.
3. Adjust power supply to 28 VDC.
4. Power up RAV controller #2.
5. Position controller #2 RAV selection switch to RAV-2.
6. Record initial switch status: Open:  $\theta$   $\theta$  Closed:  $\theta$   $\theta$ .
7. Activate controller #2 to open RAV-2 and record:
  - a. Run time: \_\_\_\_\_ seconds.
  - b. Current draw: \_\_\_\_\_ amp.
  - c. Time of day: \_\_\_\_\_.
8. Record final switch status: Open:  $\theta$   $\theta$  Closed:  $\theta$   $\theta$ .
9. When convenient, record operation in RAV log book.

G.8.2. Verify that the Fill Cap Assembly pressure rises to the Dewar Guard Tank pressure.

1. Record Fill line pressure (PFCG): \_\_\_\_\_ psig/torr.
2. Record Guard Tank Pressure (GTV-G) \_\_\_\_\_ torr diff.

G.8.3. Close SV-13 and torque to 60 +/- 5 in-lbs.

Section Complete Quality \_\_\_\_\_

**WARNING:**

**A hazardous operation is about to begin. In the following steps cold helium gas will be expelled from the stinger and transfer lines. The operator performing the operation must wear a face shield with goggles/glasses, apron, non-absorbent shoes, and cryogenic gloves. Failure to comply may result in personal injury.**

**G.9. Install Stinger in LHSD****Note:**

**Use appropriate extension for the LHSD being used and clean all O-rings and mating surfaces as required.**

- G.9.1. Turn on the amber warning light and request a PA announcement be made stating, "Attention all personnel, the GP-B program is now performing a hazardous cryogenic operation".
- G.9.2. Ensure an adequate safety clear area (15 feet) is properly designated.
- G.9.3. Ensure all nonessential personnel are clear of area.
- G.9.4. Reduce LHSD pressure to < 1.0 psig by opening low-pressure relief.
- G.9.5. Open valve VF-1 (Liquid withdrawal valve) on the stinger.
- G.9.6. Slowly insert the stinger into the LHSD while allowing it to be purged.
- G.9.7. Close valve VF-1 just as cold gas is expelled from stinger.
- G.9.8. Close the primary (low-pressure) relief valve on the LHSD.
- G.9.9. Increase LHSD ullage pressure builder to 7 to 9 psig via one of:
1. Power on the electric pressure builder **or**,
  2. Attach external source of GHe to ullage inlet per the following:
    - a. Ensure that the external source of GHe is in fact helium gas.
    - b. Attach a GHe hose to the VENT outlet of the LHSD while purging the hose and the VENT outlet.
    - c. Adjust pressure regulator to obtain 7 to 9 psig LHSD driving pressure.
- G.9.10. Record LHSD data:
- Date / time: \_\_\_\_\_ / \_\_\_\_\_
- Liquid level \_\_\_\_\_ %
- LHSD serial number: \_\_\_\_\_

Section Complete Quality \_\_\_\_\_

**Note:**

**The hazardous operation is now complete.**

- G.9.11. Request PA announcement be made that hazardous operation is complete. Request area operation light be returned to Green. Disband controlled area.

**G.10. Install Transfer Line Assembly**

**Note:**

**In the following steps the fill line is connected from the LHSD stinger at VF-1 to the SMD. Two transfer lines are available for use. One has an integrated filter and connects directly to bayonet B3 at the dewar. The other has a separate filter that is first installed at bayonet B3, after which the fill line is connected to the filter.**

- G.10.1. Remove the Fill Cap Assembly.
- G.10.2. If using Transfer Line Filter, install it in Dewar Fill Bayonet B3.
- G.10.3. Install Transfer Line as follows:

**CAUTION**

**Be sure to provide adequate support to the Fill Line by the use of support stands or other means so as to not apply excessive load on the Filter Assembly and Stinger. Failure to comply may result in equipment damage.**

- 1. Mate the Fill Line (P/N 5833804) with the LHSD Stinger at VF-1.
- 2. Mate VF-2 end of transfer line with Transfer Line Filter or B3 as appropriate.
- 3. Ensure VF-2 and relief valve stems pointed upward.

Section Complete Quality \_\_\_\_\_

**G.11. Condition Transfer Line/Filter/Stinger Assembly****G.11.1. Configure Pumping Line as follows:**

- 1. Ensure 1.5-in flexible pumping line mated to Access Port #1 of Auxiliary Gas section.
- 2. Mate other end to outlet of VF-2.

**G.11.2. Evacuate Transfer Line:**

- 1. Close/verify closed VF-3.
- 2. Open valve VF-2.
- 3. Open/verify open AV-3.
- 4. Open AV-8.
- 5. Close AV-8 when pressure reaches less than **50 mtorr** as read on gauge AG-2.

**G.11.3. Backfill Transfer Line:**

- 1. Open AV-1.
- 2. Open AV-9 until pressure reaches **0.5 psig** as read on gauge AG-1 and then Close AV-9.
- 3. Close AV-1.

**G.11.4. Evacuate Transfer Line (second time):**

- 1. Open AV-8.
- 2. Close AV-8 when pressure reaches less than **50 mtorr** as read on gauge AG-2.

## G.11.5. Backfill Transfer Line (second time):

1. Open AV-1.
2. Open AV-9 until pressure reaches **0.5 psig** as read on gauge AG-1 and then Close AV-9.
3. Close AV-1.

Section Complete Quality \_\_\_\_\_

G.12. **Start Transfer****Note:**

**This section starts the transfer by pre-cooling the SMD internal Fill Line by pushing liquid up from the Guard Tank.**

**CAUTION**

**Transfer startup is a critical operation. All potentially interfering operations must be suspended. A qualified test director/engineer must be assigned to monitor temperatures at Station 200 and the top of the lead bag during precool and initial startup of transfer. Failure to comply may result in equipment damage**

- G.12.1. Turn on Guard Tank vent line heat exchanger (EH-2).
- G.12.2. Ensure VF-3 closed.
- G.12.3. Ensure VF-2 open.
- G.12.4. Open SV-13.
- G.12.5. Record Guard Tank pressure (GTV-G): \_\_\_\_\_ torr (relative to atm).
- G.12.6. Turn on power supply for Guard-Tank heater (H-3D or H-4D)
  1. Set power supply current limit to 0.07 amps.
  2. Set to 50 VDC and record: V \_\_\_\_\_ Vdc and I \_\_\_\_\_ A.
- G.12.7. Open VF-3.
- G.12.8. Close EV-13
- G.12.9. Enter comment to DAS "Start Precool."

**NOTE:**

**Precool internal fill line until either a dense plume is evident at VF-3 or strong cooling of VF-3 vent line and Fill Valve (SV-13) temperature CN [42], is < 75 K. If the initial Guard Tank level is < 25% attempting to cool SV-13 below 75 K may result in depletion of the Guard Tank.**

G.12.10. When either a dense plume is evident from VF-3 (if applicable) or strong cooling of vent line is apparent together with the Fill Valve (SV-13) temperature T-24D, CN [42/171], reaching < 75 K,

1. Power off Guard Tank heaters.
2. Close SV-13.
3. Immediately open VF-1.

G.12.11. Open EV-13

G.12.12. When a dense plume(if applicable) or strong cooling of vent line is evident from VF-3:

1. Close VF-2 and immediately
2. Open SV-13.

G.12.13. Open EV-6 and EV-18.

G.12.14. Close VF-3 when it thaws out.

Section Complete Quality\_\_\_\_\_

G.13. **Verify Start of Transfer**

**CAUTION**

**Do not exceed 100 LL/hr transfer rate as read on PFM-1 (scale B) as this exceeds the capacity of the vent line heat exchanger (EH-2) in the Gas Module. Failure to comply may result in equipment damage.**

G.13.1. Verify flow meter (PFM-1) reading of 50 to 100 liquid liters/hour.

PFM-1 (scale B) reading: \_\_\_\_\_

Start Time: \_\_\_\_\_

G.13.2. Record LHe level of LHSD:\_\_\_\_\_ %

G.13.3. Input comment to DAS "Starting External Fill of Guard Tank P1028".

G.13.4. Record all fill data on the attached data sheet every 10 minutes.

G.13.5. Adjust LHSD pressure:

1. Close pressurization valve at the LHSD and adjust the gas supply pressure regulator to a pressure of 7 to 9 psig.
2. Reopen pressurization valve at the LHSD.

**G.14. Guard Tank fill level:**

1. Select desired Guard Tank fill level \_\_\_\_\_%
- Or,**
2. Fill to 100 % plus timed interval (monitored at <0.2 min.)

**Note:**

**Fill is to be terminated if vent flow exceeds 100 liquid liters per hour on Veeder Root read out.**

**Note:**

**Time to fill over 100% is typically 1 min for 8 psig ullage pressure.**

3. Record fill level at 100% plus \_\_\_\_ min.
4. Immediately close VF-1.

Section Complete Quality \_\_\_\_\_

**G.15. Terminate Transfer****G.15.1. Conditioning dewar fill line:**

1. Record time of day \_\_\_\_\_.
2. Close SV-13 and torque to 60 in-lbs  $\pm$  5 in-lbs **and immediately,**
3. **Open VF-2.**

Quality \_\_\_\_\_

4. Close EV-6 and EV-18.

**G.15.2. Enter comment to DAS "Stop Transfer."****G.15.3. Remove the pumping line from the Gas Module at valve VF-3.****G.15.4. Remove the Transfer and Filter Lines from the Dewar fill bayonet B3 and immediately install the Fill Cap Assembly.****G.16. Condition SMD Internal Fill Line****G.16.1. Connect a pumping line between the Fill Cap Assembly at valve FCV and the Auxiliary Gas Section access port no. 1.****G.16.2. Connect signal cable to gauge FCG.****G.16.3. Ensure valves AV-1 and AV-9 closed.**

- G.16.4. Open AV-8 and AV-3.
- G.16.5. Open valve FCV and evacuate Fill Cap Assembly to <25 mtorr measured at AG-2B.
- G.16.6. Close FCV.
- G.16.7. Open SV-13.

**Note:**  
**Relief of fill line is through Fill Cap Assembly**

- G.16.8. Close RAV-2 as follows:
  - 1. Verify RAV controller No. 2 is powered up and selector switch No. 2 is positioned to RAV-2.
  - 2. Record initial switch status: Open:  $\theta$   $\theta$  Closed:  $\theta$   $\theta$ .
  - 3. Activate controller #2 to open RAV-2 and record:
    - a. Run time: \_\_\_\_\_ seconds.
    - b. Current draw: \_\_\_\_\_ amp.
    - c. Time of day: \_\_\_\_\_.
  - 4. Record final switch status: Open:  $\theta$   $\theta$  Closed:  $\theta$   $\theta$ .
  - 5. Turn Switch No.2 to “off”.
  - 6. Power off control unit No. 2.
  - 7. Power off power supply
  - 8. When convenient, record operation in RAV log book.
- G.16.9. Open FCV and evacuate the Dewar fill line to < 25 mtorr as measured at AG-2b.
- G.16.10. Record pressure AG-2b \_\_\_\_\_ torr.
- G.16.11. Close SV-13 and torque to 60 +/- 5 in-lbs.

Quality\_\_\_\_\_

- G.16.12. Close FCV.
- G.16.13. Close AV-8.
- G.16.14. Open AV-1.
- G.16.15. Open AV-9 until pressure reaches 1.5 psig as read on gauge AG-1 and then close AV-9.
- G.16.16. Close AV-1.
- G.16.17. Monitor the pressure in the Fill Cap Assembly PFC for 15 minutes to be assured that no gas is leaking into the Fill Cap Assembly (i.e. it maintains vacuum) and record:  
Time of day \_\_\_\_\_. PFCG pressure: \_\_\_\_\_ torr.



Time of day \_\_\_\_\_. PFCG pressure: \_\_\_\_\_ torr.

Section Complete Quality\_\_\_\_\_

**G.17. Place Data Acquisition System in Standard Configuration**

- G.17.1. Input comment to DAS “Completed External fill of Guard Tank”.
- G.17.2. Stop Special Data Cycle by using [Other Menus] + [Special Data Col] + [ Stop Data Col].
- G.17.3. Set DAS data cycle interval to 15 minutes.
- G.17.4. Set Guard Tank liquid level sampling interval to 10 minutes.
- G.17.5. If used, ensure Main Tank liquid level sampling interval set to 10 minutes.
- G.17.6. Ensure the Vac-ion pump is off.
- G.17.7. Ensure all RAV operations recorded in log book.
- G.17.8. Ensure DAS alarm enabled and record set points if changed
  - o Thermal conditions substantially unchanged, alarm set points for lead bags are unchanged and set to alarm.
  - o Thermal conditions substantially changed, temperature alarm points reset as follows:
    - a. Bottom Main Tank CN[09] ] \_\_\_\_\_ K ( ≤ 2.2 K)
    - b. Guard Tank CN[24] \_\_\_\_\_ K ( ≤ 4.5 K)
- G.17.9. Ensure liquid level sensor alarms enabled on Main Tank and Guard Tank and record set points if changed.
  - 1. Main Tank Level                      Set Point \_\_\_\_\_%
  - 2. Guard Tank                              Set Point \_\_\_\_\_%
- G.17.10. Ensure Guard Tank pressure on DAS alarm list and set to alarm at >3 torr differential.
- G.17.11. Ensure DAS watchdog timer and alarm enabled.

Section Complete Quality\_\_\_\_\_

G.18. **Secure LHSD****WARNING:**

**A hazardous operation is about to begin. In the following steps cold helium gas will be expelled from the LHSD vent (LHV-1). In addition, removal of the stinger involves handling of a cold surface. Both the cold gas and the stinger surface are capable of quickly causing severe frostbite. The operator performing the operation must ensure that the cold gas is directed away from all personnel and must wear a face shield with goggles/glasses, apron, non-absorbent shoes, and cryogenic gloves. Failure to comply may result in personal injury.**

- G.18.1. Ensure an adequate safety clear area (15 feet) is properly designated.
- G.18.2. Request PA announcement that hazardous task is about to begin and request area operation light be changed to Amber.
- G.18.3. Ensure all nonessential personnel are clear of area.
- G.18.4. Shut off the GHe supply used to pressurize the LHSD.
- G.18.5. Close LHV-1 (VENT outlet valve of the LHSD), and disconnect the pressurization line.
- G.18.6. Crack open LHV-1 and LHV-2, the primary (low-pressure) relief valve, to allow the LHSD to depressurize.
- G.18.7. When the primary relief valve at LHV-2 stops venting, completely open LHV-1 and carefully remove the stinger from the LHSD and close the stinger access ball valve.
- G.18.8. Close LHV-1 (the VENT outlet valve).
- G.18.9. Ensure that LHV-2, the primary (low-pressure) relief valve, is fully open

**NOTE**

**The hazardous operation is now complete.**

- G.18.10. Have the facility monitoring personnel turn off the amber warning light and make a PA announcement stating, "Attention all personnel, the GP-B program has completed the hazardous cryogenic operation".
- G.18.11. Disband controlled area.
- G.18.12. Section Complete Quality\_\_\_\_\_

**G.19. Perform Final Closure of SV-13 and Condition Dewar Fill Cap Assembly**

Once SV-13 has warmed sufficiently (~285K) final closure may be attempted by performing the following steps.

**Note:**

**The time required to warm up sufficiently may be a few hours.**

G.19.1. Verify that the Fill Cap Assembly is still evacuated and record:

Date: \_\_\_\_\_ Time of day \_\_\_\_\_

PFCG pressure: \_\_\_\_\_

G.19.2. Re-torque SV-13 to  $60 \pm 5$  in-lbs.

Quality \_\_\_\_\_

G.19.3. Open FCV.

G.19.4. Open/Verify open AV-3.

G.19.5. Open AV-8 and evacuate to  $< 25$  mtorr as measured at AG-2b.

G.19.6. Close AV-8.

G.19.7. Ensure EV-12 closed.

G.19.8. Open AV-1.

G.19.9. Open AV-9 until pressure reaches 1.5 psig as read on gauge AG-1 and then close AV-9.

G.19.10. Close FCV.

G.19.11. Close AV-1 and record:

Time of day: \_\_\_\_\_ / PFCG pressure: \_\_\_\_\_

G.19.12. Open AV-8 and evacuate to  $< 25$  mtorr as measured at AG-2b.

G.19.13. Close AV-8.

G.19.14. Verify closure of SV-13 by observing the pressure in the Fill Cap Assembly (PFCG) until satisfied that no gas is leaking into the Dewar Fill line. Record:

Time of day \_\_\_\_\_, PFCG pressure \_\_\_\_\_ torr

G.19.15. After 30 minutes record:

Time of day \_\_\_\_\_, PFCG pressure \_\_\_\_\_ torr.

**Note:**  
**If PFCG drops by more than 0.5 torr in 30 minutes, repeat steps G.19.2 through G.19.15.**

- G.19.16. Open AV-1.
- G.19.17. Open AV-9 until pressure reaches 0 psig as read on gauge AG-1 and close AV-9.
- G.19.18. Close AV-1.
- G.19.19. Close AV-3.
- G.19.20. Turn off pump AP-1
- G.19.21. Remove pumping line from Fill Cap Assembly.
- G.19.22. Install KF-25 blank-off cap on valve FCV.

Section Complete Quality \_\_\_\_\_

**G.20. Establish Final Configuration**

- G.20.1. Record final liquid levels:
  - 1. Main Tank level(LL-1D or LL-2D): \_\_\_\_\_ %
  - 2. Guard Tank Level (LL-5D or LL-6D): \_\_\_\_\_ %
- G.20.2. Record Main Tank pressure (EG-2): \_\_\_\_\_ torr.
- G.20.3. Record Guard Tank pressure (GTV-G) \_\_\_\_\_ torr (relative to atm).
- G.20.4. Turn off Guard Tank vent line heat exchanger (EH-2).
- G.20.5. Verify final valve configuration:
  - 1. Verify open EV-13, EV-16
- G.20.6. If Well is being pumped record UTS pressure at TG-1 \_\_\_\_\_ torr.
- G.20.7. When ETC power supply No. 5 output is <0.2 amp, turn off power supply.

Section Complete Quality \_\_\_\_\_

**H. PROCEDURE COMPLETION**

**Completed by:** \_\_\_\_\_

**Witnessed by:** \_\_\_\_\_

**Date:** \_\_\_\_\_

**Time:** \_\_\_\_\_

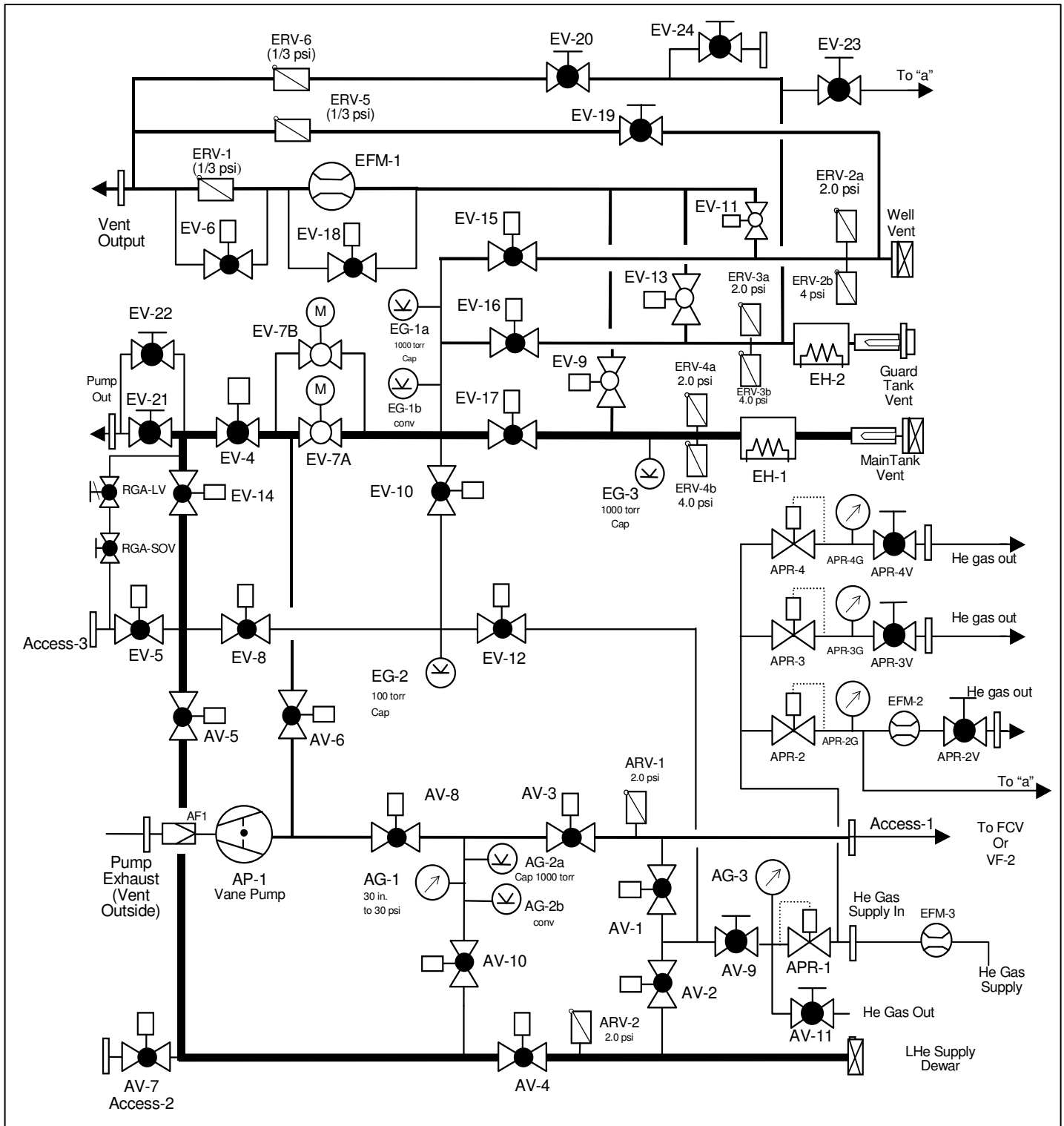
Quality Manager \_\_\_\_\_ Date \_\_\_\_\_  
Payload Test Director \_\_\_\_\_ Date \_\_\_\_\_

**Data Sheet**

Date Time	LHSD Level (%)	LHSD press (psig)	GT Liquid Level (%)	MT pressure EG-2 (Torr)	GT pressure GTV-G (Torr)	LHe Flow PFM-1 (LL/hr)	Bot MT Temp CN [09] (K)	Pb bag- top temp CN [28] (K)	GT Temp CN [24] (K)	GT Vent Line Hex EH-2 (°C/amp)	GT Vent EXT Htr , (°C/°C)

--	--	--	--	--	--	--	--	--	--	--	--

Figure 1 Gas Module Plumbing Schematic



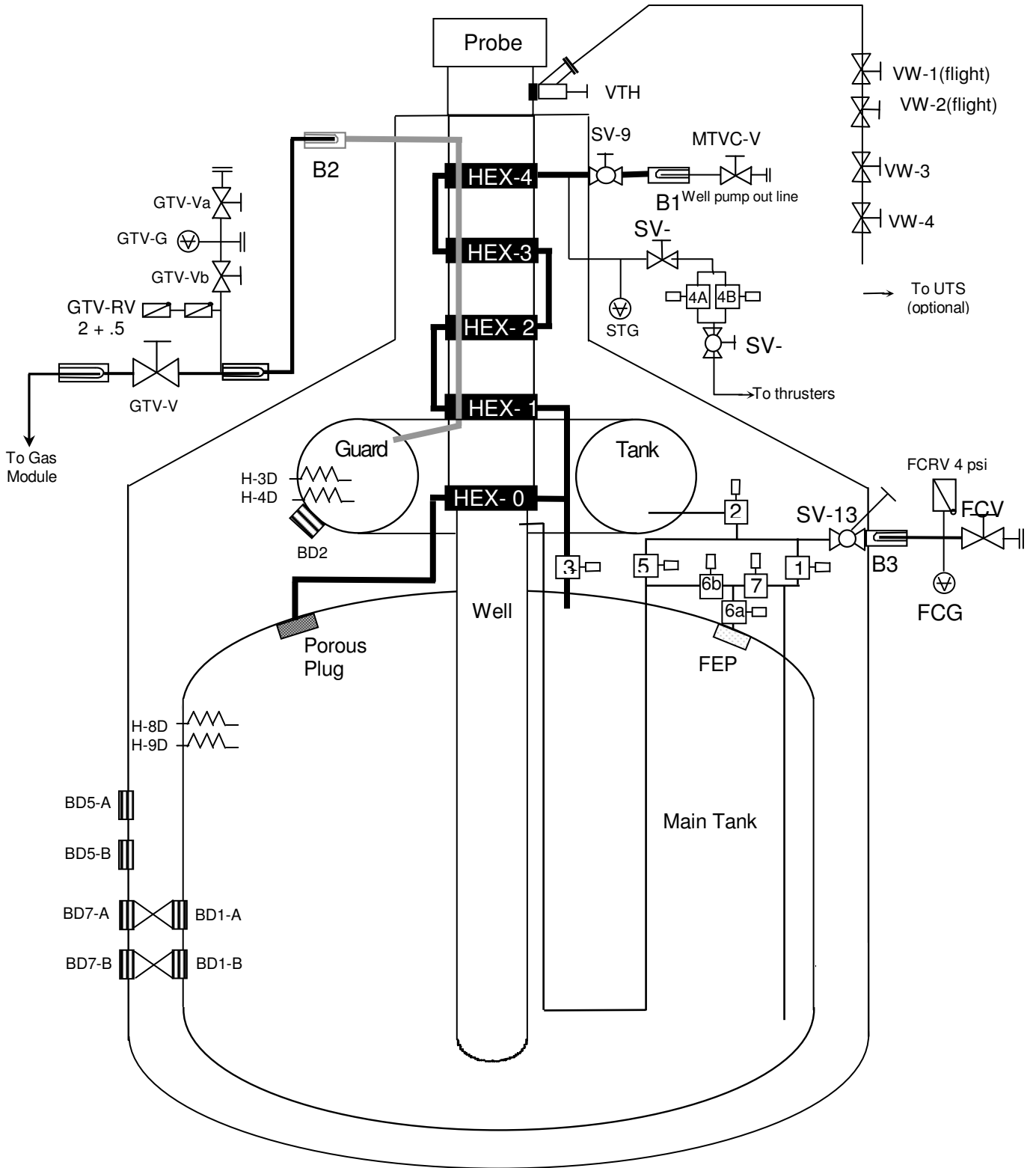


Figure 2. Schematic of Science Mission Dewar plumbing



Appendix 1

DATE	CHECKLIST ITEM	COMPLETED	REMARKS
	1. Verify the test procedure being used is the latest revision.		
	2. Verify all critical items in the test are identified and discussed with the test team.		
	3. Verify all required materials and tools are available in the test area.		
	4. Verify all hazardous materials involved in the test are identified to the test team.		
	5. Verify all hazardous steps to be performed are identified to the test team.		
	6. Verify each team member is certified for the task being performed and knows their responsibilities.		
	7. Confirm that each test team member clearly understands that he/she has the authority to stop the test if an item in the procedure is not clear.		
	8. Confirm that each test team member clearly understands that he/she must stop the test if there is any anomaly or suspected anomaly.		
	9. Notify management of all discrepancy reports or d-log items identified during procedure performance. In the event an incident or major discrepancy occurs during procedure performance management will be notified immediately.		
	10. Verify/perform pre-task engineering/safety high bay walk down. Verify noted discrepancies have been corrected.		
	11. Confirm that each test team member understands that there will be a post-test team meeting.		
	Team Lead Signature: _____		

**APPENDIX 2**

DATE	CHECKLIST ITEM	COMPLETED	REMARKS
	1. Verify all steps in the procedure were successfully completed.		
	2. Verify all anomalies discovered during testing are properly documented.		
	3. Ensure management has been notified of all major or minor discrepancies.		
	4. Ensure that all steps that were not required to be performed are properly identified.		
	5. If applicable sign-off test completion.		
	6. Verify all RAV valve operations have been entered in log book		
	7. Verify the as-run copy of procedure has been filed in the appropriate binder		
	Team Lead Signature: _____		

I. **APPENDIX 3– CONTINGENCY/EMERGENCY RESPONSES**

<b>Condition</b>	<b>Circumstance</b>	<b>Response</b>
Power Failure	Anytime	Wait for power restoration, and resume procedure
Liquid nitrogen spill	Anytime	Clear area until all spilled liquid has evaporated
Burst disk rupture (MT/GT)	Any time	Evacuate room
Pressure in Main Tank exceeds limit	Anytime	Open Main Tank vent to promote depressurization and consult test director2
Oxygen Meter Alarm	Anytime	Evacuate room